



# Growing Guide

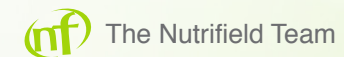


**nutrifield®**

# About

Nutrifield is an Australian, family-owned business which has been providing premium products for the horticultural industry, specialising in hydroponic and agricultural applications, since 2004. Our success is based on our renowned products, developed by expert scientists who are passionate about growing plants. Whether you are a hobbyist gardener or a large-scale farmer, we believe our customers deserve the best products for their plants and we will strive to support all their endeavours.

Nutrifield is an industry leader in innovation, known for our patented Pro Pot system, high quality substrates and superior liquid nutrients. Our extensive product range gives gardeners and farmers the flexibility to customise their growing setups and support plant growth through all stages of plant development. We believe in sharing our passion to provide high quality, science-based products and to achieve a greener and more sustainable future.



# Contents

Substrates	4
Fertiliser	13
Nutrients & Additives	14
Microbes	34
Tank Control	36
Feedcharts	40

# Substrates



## Fulfil your plant's growing requirements

The choice of a substrate is crucial to achieve outstanding results from your plants. Whilst some plants thrive in substrate-free systems, many plant roots require structural support or prefer a dryer root zone.

Nutrifield offers a broad range of substrates to suit a variety of plant-growth requirements and to ensure outstanding results in all setups.

Nutrifield substrates are developed through rigorous plant growth testing to identify perfect ratios of particle size, water retention, and longevity.

When you use Nutrifield substrates you can be sure that you're getting a premium product that will give you the best results.





## Coco Premium

*ORGANIC PLANT SUBSTRATE*

Coco Premium consists of pure high-quality desiccated coconut husk (coir), making it a reliable and easy to use substrate for hydroponic systems. The RHP certification ensures that the coir maintains a high level of consistency and quality, is pest and disease free, thoroughly rinsed, pH stabilised, pre-buffered with calcium, and has a low salt index.

Additionally, Coco Premium has an excellent capacity for liquid retention and is extremely friable. Coco Premium is an ideal substrate to ensure that nutrients are present and available during plant growth.



### For Best Results

Use COCO A & B Nutrients  
With This Product.



## Coco Perlite

*PURE BLEND 70/30*

Coco Perlite consists of a blend of 70% high-quality desiccated coconut husk (coir) and 30% perlite, making it a reliable and easy to use substrate for hydroponic systems. The RHP certification ensures that the mix of coir and perlite maintains a high level of consistency and quality, is pest and disease free, thoroughly rinsed, pH stabilised, pre-buffered with calcium, and has a very low salt index.

Coco Perlite has a good balance between liquid retention and drainage, allowing gardeners to supply nutrient solutions more frequently to ensure the consistency of nutrient profiles.



### For Best Results

Use COCO A & B Nutrients  
With This Product.





## Coco Chips

*PURE BLEND 50/50*

Coco Chips consists of a blend of 50% coir and 50% chips, making it a reliable, long-lasting, and easy to use substrate for hydroponic and soil systems. The chips are made from the same high-quality coconut husk as Nutrifield coco premium but are minimally processed for a larger particle size. The RHP certification ensures that the coir maintains a high level of consistency and quality, is pest and disease free, thoroughly rinsed, pH stabilised, and pre-buffered with calcium.

Coco Chips have a high capacity for liquid retention and high friability, which ensures that nutrients remain present and available to plant root systems.



### For Best Results

Use COCO A & B Nutrients  
With This Product.



## Coco Brick

*PREMIUM COCO COIR*

Coco Brick & Mega Brick are lightweight and easy to transport blocks of compressed premium coir. When hydrated, these bricks expand into the renowned, RHP certified, Nutrifield Coco Premium with the same excellent liquid retention and friability properties. The RHP certification ensures that the coir maintains a high level of consistency and quality, is pest and disease free, thoroughly rinsed, pH stabilised, pre-buffered with calcium and has a very low salt index.

Coco Brick & Mega Brick are portable, space efficient versions of Nutrifield Coco Premium, which is an ideal substrate for exceptional plant growth.



### For Best Results

Use COCO A & B Nutrients  
With This Product.



# Coco Cube

ORGANIC PLANT SUBSTRATE

Ready to use straight from the bag, Nutrifield Top Fill Coco Cubes offer a premium organic planting medium for growers who want consistent results with minimal fuss.

Each cube is made from 100% natural, biodegradable coco coir fibre, pre-buffered to prevent calcium and magnesium lockout.

With a low EC and stabilised pH, these cubes help reduce cross-contamination and are ideal for modular growing systems. Just plant, water, and grow.



## For Best Results

Use COCO A & B Nutrients With This Product.



# Hydro Pebbles

GREATER COVERAGE & DENSITY

Nutrifield HydroPebbles are a premium, RHP-certified horticultural substrate engineered to revolutionize hydroponic and soilless cultivation.

Designed with science and performance in mind, these irregularly shaped clay pebbles deliver unmatched benefits to growers seeking optimal results in plant health, yield, and efficiency.

Unlike standard round clay balls, Nutrifield HydroPebbles feature a unique irregular shape that maximizes surface area and provides intricate pathways for roots.



## For Best Results

Use COCO A & B Nutrients With This Product.



## Substrate Booster

*LIGNITE HUMATE 30% PREMIUM COMPOST 70%*

Supercharge your grow by inoculating, stimulating, and regenerating your substrate.

Promotes the growth of beneficial fungi (mycorrhiza) to boost plant salt tolerance, while improving substrate structure for enhanced water and nutrient retention.

Humic acid nourishes and activates fungi, while fulvic acid stimulates beneficial bacteria—creating a thriving, balanced microbial ecosystem for optimal plant performance.



### For Best Results

Use COCO A & B Nutrients  
With This Product.



## Fertiliser

### All Purpose Granular Fertiliser

*100% SOLUBLE GRANULAR*

All Purpose Granular Fertiliser boosts root development, enhances soil aeration for improved water and nutrient absorption, and helps maintain balanced pH.

This 100% natural, water-activated biostimulant contains beneficial microbes and colloidal humus to improve soil structure, increase water retention, and support vigorous plant growth.



**Formulated with PAS**, a bioactive compound inspired by natural snail extracts and sustainably sourced from a leguminous Amazonian plant—this product enhances nutrient uptake, promotes balanced soil pH, and supports plant vitality, helping crops flourish under a wide range of growing conditions.



# Nutrients & Additives



## The essential elements for growth

There are 16 essential elements that plants require for healthy growth and development. Three of these are directly absorbed from the atmosphere: oxygen (O), carbon (C) & hydrogen (H). The remaining elements are taken up by the plant through the roots.

These elements are traditionally contained within the soil, but are

prone to depletion and often require fertiliser supplementation. In a hydroponic system, these elements are dissolved in liquid nutrients making them highly bioavailable for plant uptake.

Nutrifield base nutrients include each of the 13 essential elements at optimised ratios, to ensure that plants receive the nutrients they need.



Our Signature nutrient range is a complete solution tailored to meet all your plant's needs from start to finish.

With a carefully curated blend of essential elements, vitamins, and minerals, this range provides everything necessary for a complete and successful grow cycle.

# Your Complete Solution

From promoting healthy root development to supporting robust flowering and fruiting, our signature nutrients ensure optimal growth and abundant yields.

Simplifying your growing process and guaranteeing exceptional results every time.

## Coco A & B

(1-2-2-1) | (4-0-1-0)

USE THROUGH GROWTH & FLOWER

1L, 5L,10L, 20L, 200L, 1000L



Coco A and B® provide a complete premium synthetic nutrient profile, specifically formulated to support plant growth in all mediums, including coco coir, throughout the entire growth cycle.

A

**Derived from:** Boric acid, copper EDTA, magnesium nitrate, magnesium sulphate, manganese EDTA, monopotassium phosphate, phosphoric acid, potassium hydroxide, potassium nitrate, potassium silicate, potassium sulfate, sodium molybdate, zinc EDTA

B

**Derived from:** Calcium nitrate, hydrochloric acid, iron EDDHA, magnesium nitrate, potassium fulvate (fulvic acid), potassium nitrate.

Application rates	ml/L
Vegetative	2.5
Early Flower	3.5
Late Flower	3.5

A	N - P - K - S (1.1 - 2.0 - 2.4 - 0.8)
	N-P <sub>2</sub> O <sub>5</sub> -K <sub>2</sub> O (1.1 - 4.6 - 2.8)
B	N - P - K - S (4.5 - 0.0 - 1.0 - 0.0)
	N-P <sub>2</sub> O <sub>5</sub> -K <sub>2</sub> O (4.5 - 0.0 - 1.2)



# Elements Grow A & B

(1-1-3-1) | (4-0-3-0)

USE THROUGH GROWTH

1L, 5L,10L, 20L, 200L, 1000L



Elements Bloom A & B® provide a complete premium synthetic nutrient profile, formulated to support plant growth in a range of substrates (including soil and substrate-free systems) during the flowering growth phase. The combined nutrient profile contains all essential macro and micro nutrients with an optimised NPK ratio to fulfill plant nutrient requirements.

A

**Derived from:** Boric Acid, Copper EDTA, Magnesium nitrate, Magnesium Sulphate, Manganse EDTA, Mono Potassium Phosphate, Phosphoric acid, Potassium Nitrate, Potassium silicate, Sodium Molybdate, Zinc EDTA

B

**Derived from:** Calcium Nitrate, Iron DTPA, Iron EDDHA, Potassium Fulvate, Potassium Nitrate

Weekly Vegetative Application rates	EC	mL/L
1	1.1	2.0
2	1.3	2.5
3-4	1.5	3.0

A

N - P - K - S (1.2 - 0.8 - 3.3 - 1.1)
N-P <sub>2</sub> O <sub>5</sub> -K <sub>2</sub> O (1.2 - 1.8 - 3.9)

B

N - P - K - S (3.7 - 0.0 - 3.1 - 0.0)
N-P <sub>2</sub> O <sub>5</sub> -K <sub>2</sub> O (3.7 - 0.0 - 3.7)

# Elements Bloom A & B

(1-2-4-1) | (4-0-5-0)

USE THROUGH FLOWER

1L, 5L,10L, 20L, 200L, 1000L



Elements Bloom A & B® provide a complete premium synthetic nutrient profile, formulated to support plant growth in a range of substrates (including soil and substrate-free systems) during the flowering growth phase. The combined nutrient profile contains all essential macro and micro nutrients with an optimised NPK ratio to fulfill plant nutrient requirements.

A

**Derived from:** Boric acid, copper EDTA, dipotassium phosphate, magnesium nitrate, magnesium sulphate, manganese EDTA, monopotassium phosphate, phosphoric acid, potassium Nitrate, potassium silicate, sodium molybdate, zinc EDTA

B

**Derived from:** Calcium nitrate, hydrochloric acid, iron EDDHA, magnesium nitrate, potassium fulvate (fulvic acid), potassium nitrate.

Weekly Vegetative Application rates	EC	mL/L
1-2	1.8	3.0
3-4	2.0	3.5
5	2.2	4.0
6	2.0	3.5
7	1.8	3.0
8	1.5	2.5

A

N - P - K - S (1.2 - 1.9 - 3.7 - 1.4)
N-P <sub>2</sub> O <sub>5</sub> -K <sub>2</sub> O (1.2 - 4.3 - 4.4)

B

N - P - K - S (3.8 - 0.0 - 4.8 - 0.0)
N-P <sub>2</sub> O <sub>5</sub> -K <sub>2</sub> O (3.8 - 0.0 - 5.8)

# Root Nectar

(0-0-0-0)

INCREASES ROOT GROWTH IN PLANTS

1L, 5L,10L, 20L, 200L, 1000L



Root Nectar® contains a blend of nutrients, kelp, fish hydrolysate (amino acids), and Aloe vera extract to improve root development and thereby achieve greater nutrient uptake for improved plant mass.

**Derived from:** Aloe vera extract, Ascophyllum nodosum (kelp), citric acid, diammonium phosphate, fish hydrolysate (amino acids), glycine, monoammonium phosphate, monopotassium phosphate, potassium fulvate (fulvic acid), potassium nitrate, saponin, vitamin B1

Application rates	m/L
Propagation	1
Vegetative	1
Early Flower	1
Late Flower	0.5

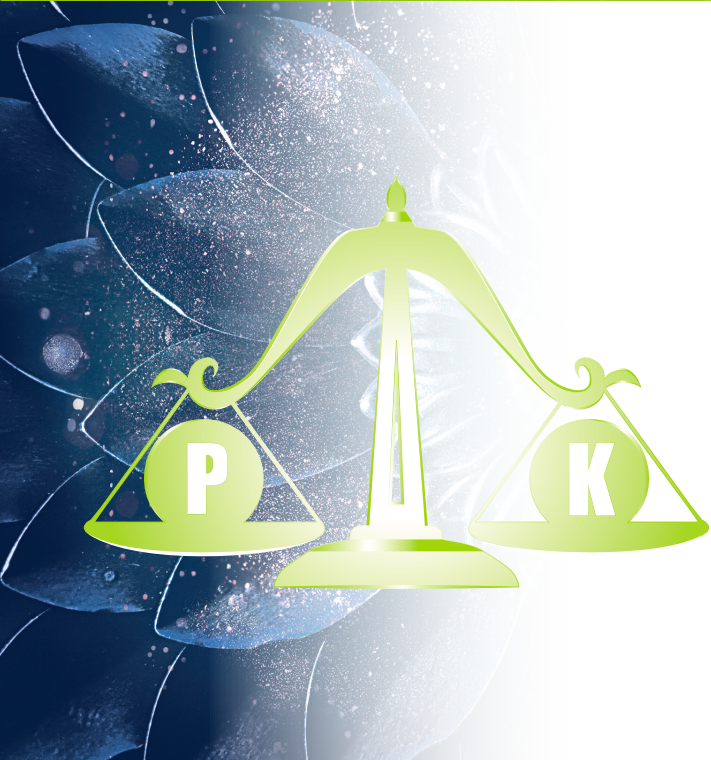
N - P - K - S (0.1 - 0.1 - 0.3 - 0.0)
N-P <sub>2</sub> O <sub>5</sub> -K <sub>2</sub> O (0.1 - 0.2 - 0.4)

# PK Heavy

(0-6-8-0)

CREATES DENSE FLOWER DEVELOPMENT

1L, 5L,10L, 20L, 200L, 1000L



PK Heavy® contains a blend of phosphorous (P), potassium (K), and triacontanol to support plant growth during the early-mid flowering growth phase and thereby stimulate yield.

**Derived from:** Dipotassium phosphate, iron EDTA, monopotassium phosphate, phosphoric acid, potassium hydroxide, potassium sulfate, triacontanol, zinc EDTA

Application rates	m/L
Early Flower	0.5

N - P - K - S (0.0 - 6.4 - 8.0 - 0.5)
N-P <sub>2</sub> O <sub>5</sub> -K <sub>2</sub> O (0.0 - 14.8 - 9.7)

# Crystalic

(0-0-2-1)

PROMOTES FLORAL DEVELOPMENT

1L, 5L,10L, 20L, 200L, 1000L



Crystalic® is a blend of the biostimulants triacontanol, galactooligosaccharides, and Aloe vera extract. Triacontanol is a beeswax-derived biostimulant which stimulates flower production, increases yield, and enhances flavour quality. Galactooligosaccharides are modified sugars that have been demonstrated to be selectively available to beneficial microbes. Similarly, Aloe vera is rich in plant-derived sugars.

Combined, these biostimulants stimulate microbial growth, which in-turn promotes plant growth and vigour. The combination of triacontanol, galactooligosaccharides, and Aloe vera extract in Crystalic® improves plant yield and flower quality, including increases to both flavour and aroma.

**Derived from:** Aloe vera extract, galactooligosaccharides, magnesium sulphate, potassium hydroxide, potassium sulphate, triacontanol

Application rates	m/L
Early Flower	2
Late Flower	2

N - P - K - S (0.0 - 0.0 - 2.1 - 1.2)
N-P <sub>2</sub> O <sub>5</sub> -K <sub>2</sub> O (0 - 0.0 - 2.4)







Our biostimulant nutrient range harnesses the power of natural compounds to optimize growth and resilience. Through a delicate balance of organic extracts, essential minerals, and cutting-edge biotechnology, our range stimulates robust plant development while enhancing nutrient uptake efficiency.

Each product is meticulously crafted to address specific plant needs at every stage of growth.

# Growing Stronger & Greener

Our commitment to sustainability drives us to utilize eco-friendly ingredients and production methods, promoting healthier ecosystems and more resilient agriculture.

With our biostimulant nutrient range, growers can achieve superior results while minimizing environmental impact, paving the way for a greener, more productive future in farming.

## Fulife

(0-0-0-0)

OPTIMISES PLANT GROWTH

1L, 5L,10L, 20L, 200L, 1000L



Fulife® contains fulvic acid to improve nutrient availability.

Fulvic acid is a natural chelator and biostimulant, which promoted nutrient bioavailability, improves stress tolerance, and stimulates plant growth.

**Derived from:** Citronella oil, potassium fulvate (fulvic acid).

Application rates	ml/L
Vegetative	1
Early Flower	0.5
Late Flower	0.75

N - P - K - S (0.0 - 0.0 - 0.4 - 0.0)
N-P <sub>2</sub> O <sub>5</sub> -K <sub>2</sub> O (0.0 - 0.0 - 0.5)

# Veg Ignitor

(2-2-3-1)

PROMOTES VEGETATIVE GROWTH

1L, 5L,10L, 20L, 200L, 1000L



Veg Ignitor® contains a blend of nutrients, kelp, and fish hydrolysate (amino acids), to promote vegetative growth.

These biostimulants beneficially stimulate plant growth resulting in increased plant mass.

**Derived from:** Ascophyllym nodosum (kelp), fish hydrolysate (amino acids), monoammonium phosphate, monopotassium phosphate.

Application rates	ml/L
Vegetative	0.5

N - P - K - S (2.4 - 1.6 - 3.2 - 0.7)
N-P <sub>2</sub> O <sub>5</sub> -K <sub>2</sub> O (2.4 - 3.6 - 3.8)

# Bud Burst

(0-1-1-0)

MAXIMISES YIELD

1L, 5L,10L, 20L, 200L, 1000L



Bud Burst® contains kelp and naturally derived triacontanol, a plant biostimulant found in plant cuticle waxes and beeswax.

The effect of this biostimulant activates plant flowering mechanisms to promote flowering yield and quality, and increased flower number and size.

**Derived from:** Ascophyllym nodosum (kelp), boric acid, phosphoric acid, potassium sorbate, triacontanol.

Application rates	ml/L
Early Flower	3
Late Flower	3

N - P - K - S (0.0 - 0.9 - 0.9 - 0.1)
N-P <sub>2</sub> O <sub>5</sub> -K <sub>2</sub> O (0.0 - 2.0 - 1.1)



# Cargo Boost

(1-0-0-0)

FACILITATES NUTRIENT UPTAKE

1L, 5L,10L, 20L, 200L, 1000L



Cargo Boost® contains a unique combination of kelp, amino acids, and polysaccharides to improve nutrient availability and support beneficial microbes to improve yield, flavour, and aroma.

**Derived from:** Ascophyllum nodosum (kelp), fish hydrolysate (amino acids), molasses, potassium fulvate (fulvic acid)

Application rates	ml/L
Vegetative	1.0
Early Flower	1-2
Late Flower	1.5

N - P - K - S (0.6 - 0.1 - 0.2 - 0.0)
N-P <sub>2</sub> O <sub>5</sub> -K <sub>2</sub> O (0.6 - 0.2 - 0.2)

# Rapid Root

1-3-5-0

CLONING GEL

10ML, 50ML, 250ML, 500ML, 1L, 5L



Rapid Root is a natural PGR-free rooting gel-cuttings stimulant containing the biostimulant willow bark extract, which stimulates root growth in softwood and semi-hardwood cuttings. Willow bark extract acts on cuttings to induce root initiation, emergence, and growth.

Rapid Root can be used in many propagation techniques to increase strike rate and efficiently establish plant clones from cuttings.

## Usage

Decant a small volume of Rapid Root into a clean jar/ container. Dip fresh cutting into gel prior to introducing into propagation system. Discard remaining decanted gel. Use within 3 months of opening.

N - P - K - S (0.8 - 3.5 - 5.3 - 0.0)
N-P <sub>2</sub> O <sub>5</sub> -K <sub>2</sub> O (0.8 - 7.9 - 6.4)



Carefully formulated with the essential elements necessary for optimal health, this range serves as the bedrock of your plant's well-being.

From bolstering natural defenses against pests and diseases to promoting vigorous growth and lush foliage, our nutrients provide the foundation for thriving gardens and bountiful harvests.

## Nourishing Plants for Lifelong Health

With a focus on purity and potency, our plant health enhancers deliver the vital nutrients plants crave, ensuring they reach their full potential.

Trust in our range as the essential elements for cultivating a garden teeming with vitality and vitality.

## Calcium Magnesium

(2-0-0-0)

PREVENTS & SOLVES NUTRIENT DEFICIENCIES

1L, 5L, 10L, 20L, 200L, 1000L



Calcium Magnesium is a concentrated synthetic blend of the secondary nutrients calcium and magnesium, and the micronutrient iron, which prevents or remedies deficiencies. Calcium is a component of enzymes and magnesium is an essential building block of chlorophyll.

Similarly, iron is a micronutrient crucial for chlorophyll biosynthesis and photosynthetic activity.

**Derived from:** Calcium EDTA, calcium nitrate, iron DTPA, iron EDTA, magnesium nitrate

### Application rates

Apply at 1.25 mL/L, and as needed increase up to 2 mL/L

N - P - K - S (2.0 - 0.0 - 0.0 - 0.0)

N-P<sub>2</sub>O<sub>5</sub>-K<sub>2</sub>O (2.0 - 0.0 - 0.0)

# Ripe-N

(0-0-0-0)

ENHANCES FLOWER QUALITY & AROMA

1L, 5L,10L, 20L, 200L, 1000L



Ripe-N supports crop maturation by reducing excess nitrogen during the final stages of flowering. It encourages the plant to complete its life cycle, promoting the natural production of terpenes and other quality compounds, enhancing overall flower quality, aroma, and finish.

**Derived from:** Boric Acid, Calcium Chloride, Copper EDTA, Iron DTPA, Manganese EDTA, Sodium Molybdate, Zinc EDTA

Application rates	ml/L
Late Flower	2.5-4

N - P - K - S (0.0 - 0.0 - 0.0 - 0.0)
N-P <sub>2</sub> O <sub>5</sub> -K <sub>2</sub> O (0.0 - 0.0 - 0.0)

# Si-Phi

(0-3\*-17-0)

PREVENTS PLANT STRESS

1L, 5L,10L, 20L, 200L, 1000L



Si-Phi® is a synthetic blend of potassium silicate (Si) and potassium phosphite (Phi). Silicate is a bioavailable form of the trace mineral silicon, and phosphite (Phi) is a non-nutritive form of phosphorous (P) which is distinct from the nutritive form of P, phosphate.

Both Si and Phi function as biostimulants to promote plant stress tolerance, resulting in improved plant growth, vigor, and yield over a broad range of environmental conditions.

**Derived from:** Monopotassium phosphite, potassium hydroxide, potassium silicate

Application rates	ml/L
Vegetative	0.2
Early Flower	0.2
Late Flower	0.2

N - P - K - S (0.0 - 3.2* - 17.3 - 0.0)
N-P <sub>2</sub> O <sub>5</sub> -K <sub>2</sub> O (0.0 - 0.0 - 20.8)

# Microbes

## Greater defence against diseases

Beneficial microbes help plants ward off a wide range of diseases. The fungus Trichoderma, is known to produce enzymes that help break down dead plant material for nutrient recycling.

By removing dead tissue around old roots, plants can generate new healthy roots and take up more nutrients. Mycorrhizae are root fungi that live symbiotically with the plant,

meaning both the plant and the fungi benefit from the interaction. The plant provides the fungi with an environment to grow within its roots, while the mycorrhizae take up complex nutrients from the environment and process them into plant-bioavailable forms.

Nutrifield Micro Thrive supports vigorous plant growth by improving the availability of complex nutrients in the substrate.



## Micro Thrive

*PROMOTES PLANT HEALTH*

Micro Thrive is a specialised blend of beneficial, symbiotic microorganisms and fungi, including Trichoderma and vigorous plant growth promoting rhizobacteria (PGPR).

Inoculation of substrates with Micro Thrive establishes a healthy rhizosphere, where beneficial microbes outcompete harmful microbes, to promote increased nutrient uptake which supports plant health and improved yield. Nutrifield Micro Thrive achieves best results when used to inculcate substrates at the start of a growing cycle. This ensures the mycorrhizae are well established in time for the flowering phase.

The mycorrhizae improve the bioavailability of the micronutrients zinc (Zn) and copper (Cu), as well as the macronutrient phosphorous (P), which is in increased demand during the flowering phase.



# Tank Control

## Creating a stable environment

The hydroponic tank is one of the most important parts of your hydroponic system. To ensure your plants can thrive and are healthy, proper tank maintenance is essential.

Maintaining proper levels in your tank can lead to plants growing faster with bigger yields. If the levels of a solution are not within the correct range, the plant will not

have the ability to absorb some of the essential elements required for proper plant growth. This can cause the plant to suffer leaf and nutrient deficiencies.

With proper testing and regular maintenance, it should be easy to get on a steady schedule for adding nutrients and managing EC levels.

## pH UP & Down

REACH THE DESIRED pH LEVEL

250ML, 1L, 5L



pH Up & pH Down are tank controllers that assist in reaching a desired pH level. The pH scale measures how acidic or basic (alkaline) a substance is. It ranges from 0 to 14. A pH of 7 is neutral. A pH less than 7 is acidic, and a pH greater than 7 is basic (alkaline).

Plants thrive in a pH range of 5.5 to 6.5. When preparing nutrients, or regularly monitoring your reservoir or tank, you should always check your pH levels to ensure that the pH stays within an acceptable range for your plants.

When pH levels become too high, nutrients become non-bioavailable a phenomenon commonly referred to as 'nutrient lock-out'.

Accordingly, pH control using pH Up & pH Down is essential to ensure nutrients remain fully available for plant growth.



# Probe Protect

HELPS PROBE LIFESPAN

250ML, 1L, 5L



Probe Protect is a specialised solution formulated with potassium chloride (KCl) that serves multiple purposes in the maintenance of pH probes.

Designed as a concentrated solution, its primary function is to facilitate the hydration and storage of pH probes, ensuring their longevity and accuracy over time.

The composition of Probe Protect is tailored to closely match the gel found inside pH probes. This close resemblance promotes probe integrity by creating an environment that is conducive to their proper functioning.

By using Probe Protect for hydration and storage, pH probes are effectively preserved and maintained, thereby extending their lifespan.

This solution acts as a safeguard against potential damage or deterioration that could occur during periods of disuse or improper storage.

# Calibration Solutions

PROVIDE ACCURATE READINGS

250ML, 1L, 5L



Nutrifield Calibration Solutions ensure that devices are functioning correctly to provide accurate readings for pH and EC, during tank control.

## pH 4 and 7

Nutrifield pH Calibration Solutions ensure that pH measuring devices are reading accurately between pH 4 and 7. It is important to verify that pH meters are reading accurately, to ensure that nutrients remain available for healthy plant growth.

## EC 2.77 & 1.413

Nutrifield Electrical Conductivity (EC) Calibration Solution ensures that devices are measuring EC accurately. EC is a measure, which is used as a proxy for the strength of hydroponic nutrient solutions.

It is affected by the total amount of dissolved ions in the solution, which plants consume as nutrients.

# Feedcharts

## Your essential guides

Our guides are designed to help growers provide the optimal nutrients to their plants throughout their growth cycles.

At the core of our feedchart are detailed schedules that indicate when and how much of each nutrient or additive to apply.

This schedule is often divided into phases such as vegetative growth and flowering.



## Important Notes:

Recommended EC will vary depending on the water used.

Our feeding charts assume the use of soft water. Adjust water accordingly by reducing the base nutrient dosage.

Water Type	EC Adjustment
RO	-0.2EC
Soft	0.0EC
Medium	+0.2EC
Hard	+0.4EC



**Bio Range Usage:**

The Bio range can be used either in addition to the signature line or on its own.

Bio has a full organic profile, it is unsuitable for clean run NFT, DWC and dosing systems.

Do not use peroxide, chlorine, or any other bacteria-killing products with Bio Range.



**Micro Thrive Usage:**

Micro Thrive is mixed with media or watered through pots as a drench.

Avoid putting it in the reservoir. If added to water, dechlorinate first.

Important Notes

Base Nutrient is in G per L, Additives are in ml per L.  
EC and dosage values are a guide; results vary with water, temperature, and equipment. Add additives first, then base nutrients to reach target EC.

WEEK	EC
------	----

Established Seedlings	1.0
-----------------------	-----

Vegetative Cycle	1	1.6
	2	1.8
	3	1.8
	*4	1.8

\*Repeat week 4 if extending Veg Stage

Flowering Cycle	1	1.8
	2	1.8
	3	2.0
	4	2.0
	5	2.2
	6	2.0
	7	1.8
	*8	1.6

\*Repeat week 8 until ripe if necessary

Base Nutrient

Granular 1-Part

ALL PURPOSE

GRANULAR

FERTILISER

0.5
-----

0.8
0.9
0.9
0.9

0.9
0.9
1.0
1.0
1.2
1.0
0.9
0.8

1-Part Feedchart

Signature

Additives

ROOT NECTAR

PK HEAVY

CRYSTALIC

1.0		
-----	--	--

1.0		
1.0		
1.0		
1.0		

1.0	0.5	
1.0	0.5	2.0
1.0	0.5	2.0
1.0	0.5	2.0
0.5	0.5	2.0
0.5	0.5	2.0
0.5		2.0
0.5		2.0

**Important Notes**

Dosages are in ml per L. EC and dosage values are a guide; results vary with water, temperature, and equipment. Add additives first, then base nutrients to reach target EC.

WEEK	EC
------	----

Established Seedlings	1.1
-----------------------	-----

Vegetative Cycle	1	1.6
	2	1.6
	3	1.8
	*4	1.8

\*Repeat week 4 if extending Veg Stage

Flowering Cycle	1	1.8
	2	1.8
	3	2.0
	4	2.0
	5	2.2
	6	2.0
	7	1.8
	*8	1.6

\*Repeat week 8 until ripe if necessary

Base Nutrients	
Coco 2-Part	
COCO A	COCO B

1.5	1.5
-----	-----

2.5	2.5
2.5	2.5
3.0	3.0
3.0	3.0

2.5	2.5
2.5	2.5
3.0	3.0
3.0	3.0
3.0	3.0
3.5	3.5
3.0	3.0
3.0	3.0
2.5	2.5

## 2-Part Feedchart

Signature		
Additives		
ROOT NECTAR	PK HEAVY	CRYSTALIC

1.0		
-----	--	--

1.0		
1.0		
1.0		
1.0		

1.0	0.5	
1.0	0.5	2.0
1.0	0.5	2.0
1.0	0.5	2.0
0.5	0.5	2.0
0.5	0.5	2.0
0.5		2.0
0.5		2.0

Important Notes

Dosages are in ml per L. EC and dosage values are a guide; results vary with water, temperature, and equipment.  
Add additives first, then base nutrients to reach target EC.

WEEK	EC
------	----

Established Seedlings	1.1
-----------------------	-----

Vegetative Cycle	1	1.6
	2	1.6
	3	1.8
	*4	1.8

\*Repeat week 4 if extending Veg Stage

Flowering Cycle	1	1.8
	2	1.8
	3	2.0
	4	2.0
	5	2.2
	6	2.0
	7	1.8
	*8	1.6

\*Repeat week 8 until ripe if necessary

Base Nutrients	
Elements 4-Part	
GROW A	GROW B
BLOOM A	BLOOM B

2.0	2.0
-----	-----

Elements Grow	2.5	2.5
	2.5	2.5
	3.0	3.0
	3.0	3.0

Elements Bloom	3.0	3.0
	3.0	3.0
	3.5	3.5
	3.5	3.5
	4.0	4.0
	3.5	3.5
	3.0	3.0
	2.5	2.5

4-Part Feedchart

Signature		
Additives		
ROOT NECTAR	PK HEAVY	CRYSTALIC

1.0		
-----	--	--

1.0		
1.0		
1.0		
1.0		

1.0	0.5	
1.0	0.5	2.0
1.0	0.5	2.0
1.0	0.5	2.0
0.5	0.5	2.0
0.5	0.5	2.0
0.5		2.0
0.5		2.0



Important Notes

Base Nutrient is in G per L, Additives are in ml per L.  
EC and dosage values are a guide; results vary with water, temperature, and equipment. Add additives first, then base nutrients to reach target EC.

WEEK	EC
------	----

Established Seedlings	1.0
-----------------------	-----

Vegetative Cycle	1	1.6
	2	1.8
	3	1.8
	*4	2.0

\*Repeat week 4 if extending Veg Stage

Flowering Cycle	1	2.5
	2	2.5
	3	2.8
	4	2.8
	5	3.0
	6	2.8
	7	2.6
	*8	1.6

\*Repeat week 8 until ripe if necessary

Base Nutrient
Granular 1-Part
ALL PURPOSE GRANULAR FERTILISER

0.5
-----

0.8
0.9
0.9
0.9

1.0
1.2
1.2
1.4
1.5
1.4
1.3
0.8

1-Part High Output Feedchart

Signature		
Additives		
ROOT NECTAR	PK HEAVY	CRYSTALIC

1.5		
-----	--	--

1.5		
1.5		
1.5		
1.5		

1.5	1.0	
1.5	1.0	3.0
1.5	1.0	3.0
1.5	1.0	3.0
1.0	1.0	3.0
1.0	1.0	3.0
0.5		3.0
0.5		3.0

**Important Notes**  
Dosages are in ml per L. EC and dosage values are a guide; results vary with water, temperature, and equipment.  
Add additives first, then base nutrients to reach target EC.

WEEK	EC
------	----

Established Seedlings	1.1
-----------------------	-----

Vegetative Cycle	1	1.6
	2	1.8
	3	1.8
	*4	2.0

\*Repeat week 4 if extending Veg Stage

Flowering Cycle	1	2.4
	2	2.4
	3	2.8
	4	2.8
	5	3.0
	6	2.8
	7	2.4
	*8	1.8

\*Repeat week 8 until ripe if necessary

Base Nutrients	
Coco 2-Part	
COCO A	COCO B

1.5	1.5
-----	-----

2.5	2.5
3.0	3.0
3.0	3.0
3.2	3.2

3.5	3.5
3.5	3.5
4.25	4.25
4.25	4.25
5.0	5.0
4.25	4.25
3.5	3.5
2.5	2.5

## 2-Part High Output Feedchart

Signature		
Additives		
ROOT NECTAR	PK HEAVY	CRYSTALIC

1.5		
-----	--	--

1.5		
1.5		
1.5		
1.5		

1.5	1.0	
1.5	1.0	3.0
1.5	1.0	3.0
1.5	1.0	3.0
1.0	1.0	3.0
1.0	1.0	3.0
0.5		3.0
0.5		3.0

Important Notes

Dosages are in ml per L. EC and dosage values are a guide; results vary with water, temperature, and equipment.  
Add additives first, then base nutrients to reach target EC.

WEEK	EC
------	----

Established Seedlings	1.1
-----------------------	-----

Vegetative Cycle	1	1.6
	2	1.8
	3	1.8
	*4	2.0

\*Repeat week 4 if extending Veg Stage

Flowering Cycle	1	2.4
	2	2.4
	3	2.8
	4	2.8
	5	3.0
	6	2.8
	7	2.4
	*8	1.8

\*Repeat week 8 until ripe if necessary

Base Nutrients	
Elements 4-Part	
GROW A	GROW B
BLOOM A	BLOOM B

2.0	2.0
-----	-----

Elements Grow	2.5	2.5
	3.0	3.0
	3.0	3.0
	3.5	3.5

Elements Bloom	4.0	4.0
	4.0	4.0
	4.5	4.5
	4.5	4.5
	5.0	5.0
	4.5	4.5
	4.0	4.0
	3.0	3.0

4-Part High Output Feedchart

Signature		
Additives		
ROOT NECTAR	PK HEAVY	CRYSTALIC

1.5		
-----	--	--

1.5		
1.5		
1.5		
1.5		

1.5	1.0	
1.5	1.0	3.0
1.5	1.0	3.0
1.5	1.0	3.0
1.0	1.0	3.0
1.0	1.0	3.0
0.5		3.0
0.5		3.0



## Get in touch

[info@nutrifield.com](mailto:info@nutrifield.com)

[Locate your nearest stockist](#)





nutrifield®



[nutrifield.com](http://nutrifield.com)